

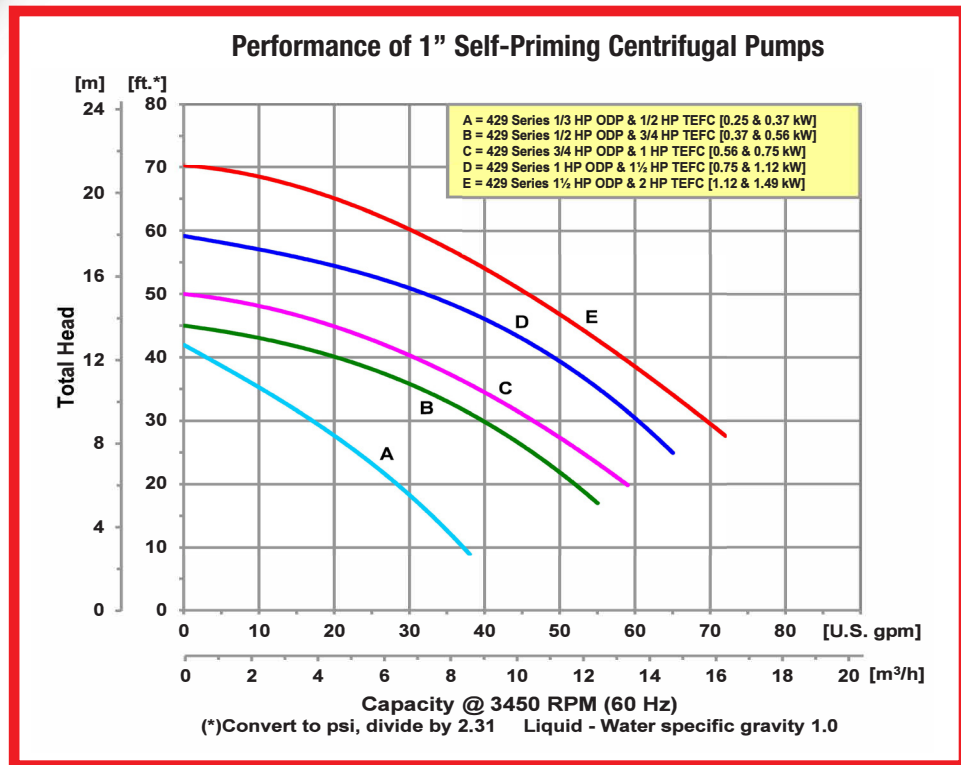
# 1" Self-Priming Stainless Steel Centrifugal Pumps

Model 429A-98



- **300 Series Investment Cast Stainless Steel Construction**
- **Viton® Mechanical Seal and O-Ring**
- **Handles Liquids and Chemicals with Specific Gravities up to 1.6**
- **1" NPT Suction and Discharge Ports**
- **Maximum Temperature 200° F**
- **Maximum Flow 72 GPM**
- **Maximum Head 74 Ft.**
- **Self-priming to 6 Ft.**
- **Self-Cleaning, Semi-Open Impeller**
- **Solids Handling and Dirty Water Design**
- **1/3 to 2 HP Single or Three Phase Motors**

AMT 300 Series Investment Cast Stainless Steel Transfer pumps are designed to handle liquids and chemicals with specific gravities to 1.6. The pumps are particularly well suited to applications involving perchloroethylene (PCE) and are recommended for use with non-flammable liquids. Pumps are designed to handle liquids with solids content or dissolved solids and debris.



400 Spring Street • Royersford, PA 19468 USA

[www.amtpump.com](http://www.amtpump.com) • 888-amt-pump (268-7867)

For use with nonflammable liquids compatible with pump component materials. Viton® and Teflon® are registered trademarks of E. I. DuPont.

## Pump Dimensional & Specification Data

Model	Curve	HP	PH	ENC	Voltage @ 60 Hz	Full Load Amps	SUC*	DIS*	L**	W**	H	Ship Wt. (Lbs.)
4294-98	A	1/3	1	ODP	115/230	8/4	1	1	15.2 [38.6]	6.8 [17.3]	9.0 [22.8]	34
429A-98		1/2	1	TEFC	115/230	9/5			15.6 [39.6]	8.9 [22.7]	9.0 [22.8]	41
4295-98	B	1/2	1	ODP	115/230	10/5	1	1	15.4 [39.1]	6.8 [17.3]	9.0 [22.8]	38
429B-98		3/4	1	TEFC	115/230	9/5			16.1 [40.9]	8.9 [22.7]	9.0 [22.8]	43
429K-98		3/4	3	TEFC	230/460	3/2			15.7 [39.9]	8.9 [22.7]	9.0 [22.8]	40
4296-98	C	3/4	1	ODP	115/230	13/7	1	1	15.9 [40.4]	6.8 [17.3]	9.0 [22.8]	39
429C-98		1	1	TEFC	115/230	12/6			16.4 [41.7]	8.9 [22.7]	9.0 [22.8]	52
429L-98		1	3	TEFC	230/460	4/2			16.2 [41.1]	8.9 [22.7]	9.0 [22.8]	43
4297-98	D	1	1	ODP	115/230	17/9	1	1	16.2 [41.1]	6.8 [17.3]	9.0 [22.8]	42
429D-98		1½	1	TEFC	115/230	18/9			16.9 [42.9]	8.9 [22.7]	9.0 [22.8]	54
429M-98		1½	3	TEFC	230/460	5/3			16.9 [42.9]	8.9 [22.7]	9.0 [22.8]	51
4298-98	E	1½	1	ODP	115/230	22/11	1	1	16.7 [42.4]	6.8 [17.3]	9.0 [22.8]	52
429E-98		2	1	TEFC	115/230	22/11			17.6 [44.7]	8.9 [22.7]	9.0 [22.8]	65
429N-98		2	3	TEFC	230/460	6/3			17.4 [44.2]	8.9 [22.7]	9.0 [22.8]	62

(\*) Standard NPT (Female) pipe thread.

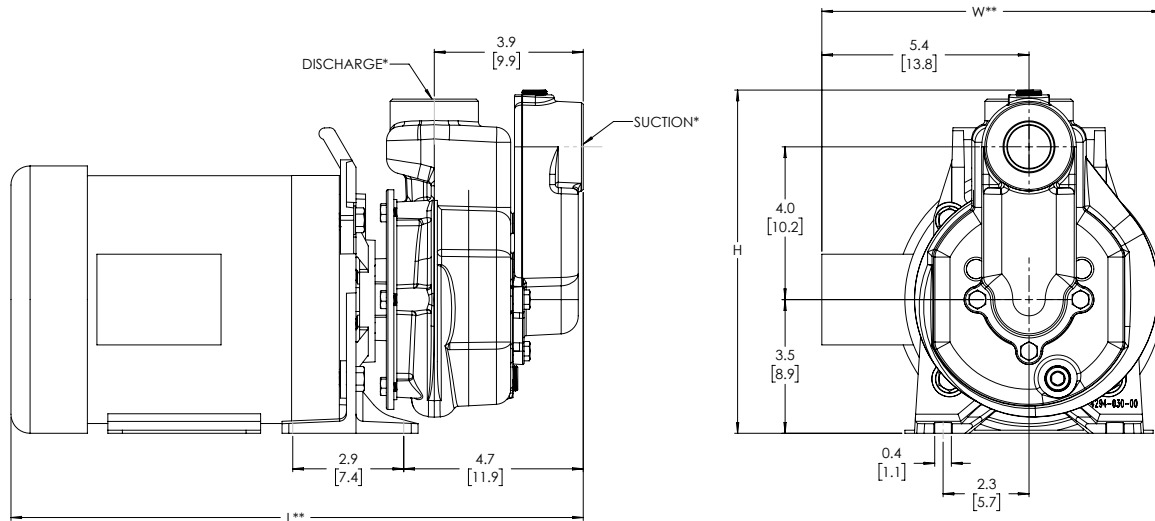
(\*\*) This dimension may vary due to motor manufacturer's specifications.

(+) 3-Phase motors can also operate on 50 Hz. (this will change full load amps, service factor and RPM)

NOTE: Dimensions are in inches (centimeters) and have a tolerance of ± 1/4".

NOTE: Electric supply for ALL motors must be within ± 10% of nameplate voltage rating (e.g. 230V ± 10%=207 to 253)

Maximum Solids Handling Capacity: 1/8" Diameter



## Standard Features

- 300 Series Investment Cast Stainless Steel Construction
- Viton® Mechanical Seal and O-ring
- 1" NPT Suction and Discharge Ports
- ODP or TEFC Single and Three Phase Motors
- Maximum Working Pressure 75 PSI
- Maximum Temperature 200° F
- Self-cleaning, Semi-open Impeller
- QSP – Quick Ship Pump for Many Models

**Hazardous Duty/Explosion Proof motors available from stock ranging from 1 to 10 HP; CALL FOR QUOTATION & LEAD TIME!**